

MagRemote

Auto Control Gate Management Software

Revision C
22 August 2017

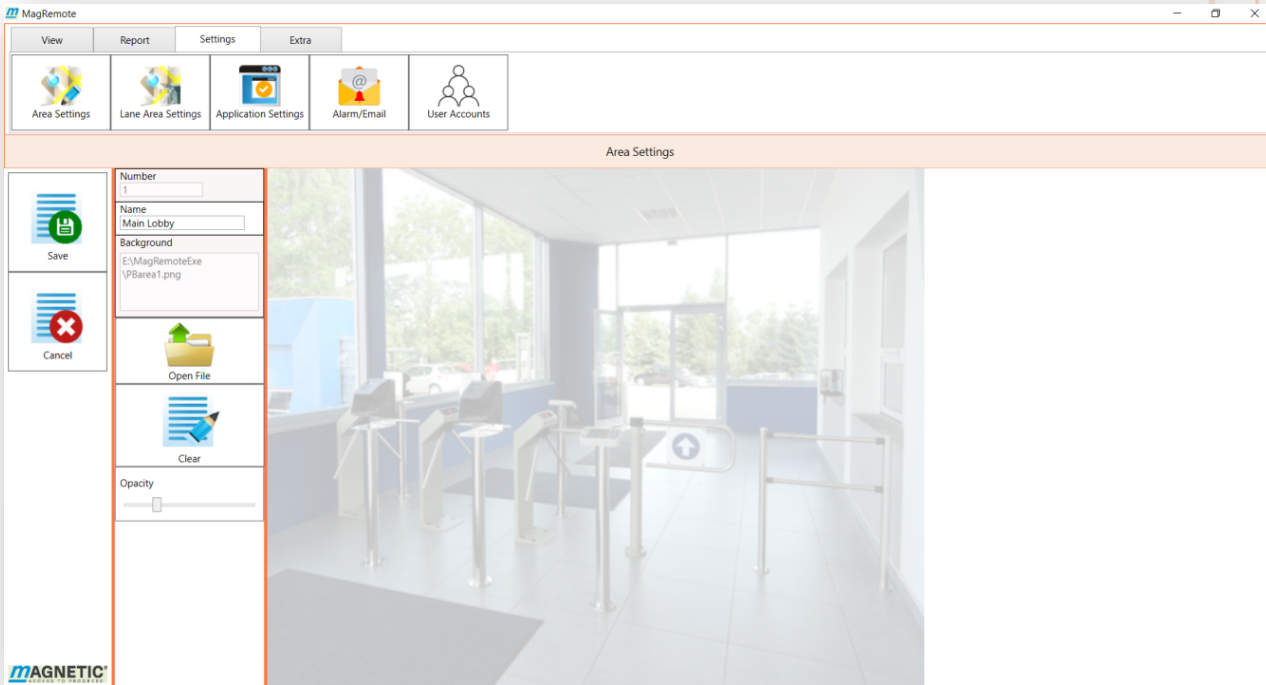


Table of Contents

Table of Contents 3

1 Introduction 7

2 Installation 7

 2.1 System Requirements 7

 2.2 Running the Setup Utility 7

 2.3 Uninstalling the MagRemote Software 9

3 Running the Software 10

 3.1 Screen Layout 10

 3.1.1 Main Tabs 11

 3.1.2 Navigation Buttons 11

 3.1.3 Navigation/Alarm Bar 11

4 Extra Tab – Logging In 12

 4.1 Login 12

 4.2 Logout 13

 4.3 About 13

5 Settings Tab – Configuring Your Facility 14

 5.1 Facility Settings 14

 5.1.1 Edit 15

 5.1.2 New 16

 5.1.3 Delete 16

 5.2 Area Settings 17

 5.2.1 Edit 17

 5.2.2 New 19

 5.2.3 Delete 19



- 5.2.4 Position..... 19
- 5.3 Application Settings 21
- 5.4 Alarm/Email 22
 - 5.4.1 Configuring the Host Email Server..... 23
 - 5.4.2 Setting up Email Clients..... 23
 - 5.4.2.1 New 23
 - 5.4.2.2 Delete..... 24
 - 5.4.3 Configuring Alarms and Email Notifications..... 24
 - 5.4.3.1 Notifications by ID..... 24
- 5.5 User Accounts 26
 - 5.5.1 Edit 26
 - 5.5.2 New 28
 - 5.5.3 Delete 28
- 6 View Tab – Monitoring and Controlling Your Facility 28
 - 6.1 View Area 28
 - 6.1.1 View Area List Mode 29
 - 6.1.2 View Area Map Mode 30
 - 6.1.2.1 View Area Commands..... 30
 - 6.1.2.2 View Area Status 32
 - 6.1.2.3 View Area Diagram 33
 - 6.2 View Lane 33
 - 6.2.1 View Lane List Mode 33
 - 6.2.2 View Lane Map Mode 34
 - 6.2.2.1 View Lane Commands..... 35
 - 6.2.2.2 View Lane Status 36
 - 6.2.2.3 View Lane Diagram 36



- 6.3 View Counts 36
 - 6.3.1 View Counts Diagram 37
 - 6.3.2 Reset Counts 38
- 6.4 View Logs - Monitoring the System Status..... 38
- 6.5 Report Tab – Generating Reports 39
 - 6.5.1 Facility Report 39
 - 6.5.1.1 Hourly Report..... 40
 - 6.5.1.2 Daily Report 40
 - 6.5.1.3 Monthly Report..... 41
 - 6.5.1.4 Yearly Report 41
 - 6.5.2 Area Report 41
 - 6.5.3 Lane Report 42
- 7 Appendix..... 43
 - 7.1 Ethernet I/O Module to MBC-110..... 43
 - 7.1.1 Ethernet I/O Module Inputs to MBC 110 Outputs X1 43
 - 7.1.2 Ethernet I/O Outputs to MBC 110 Inputs X2..... 43
 - 7.1.3 Ethernet I/O Power to MBC 110 X7..... 43
 - 7.2 Ethernet I/O Module to MBC-111..... 44
 - 7.2.1 Ethernet I/O Inputs to MBC 111 Outputs..... 44
 - 7.2.2 Ethernet I/O Outputs to MBC 111 Inputs..... 44

List of Figures

Figure 2-1 Windows Defender Messages..... 8

Figure 2-2 - User Account Control Warning 9

Figure 2-3 Install Warning Message 9

Figure 3-1 General Screen Layout 10

Figure 3-2 Alarm Bar 12

Figure 4-1 User Login Screen 13

Figure 4-2 About 14

Figure 5-1 Facility Settings Screen 15

Figure 5-2 Facility Settings New and Edit Screen 16

Figure 5-3 Area Settings Main Screen 17

Figure 5-4 Area Settings New and Edit Screen 19

Figure 5-5 Area Settings Position Screen 20

Figure 5-6 Visual Indicators..... 20

Figure 5-7 Application Settings Screen 22

Figure 5-8 Alarm/Email Configuration 23

Figure 5-9 User Accounts 26

Figure 5-10 User Accounts New and Edit Screen 27

Figure 6-1 View Area List Mode 29

Figure 6-2 View Area Map Mode 30

Figure 6-3 View Lane List Mode 34

Figure 6-4 View Lane Map Mode 35

Figure 6-5 View Counts Main Screen 37

Figure 6-6 View Logs Main Screen 38

Figure 6-7 Facility Report Screen 40

Figure 6-8 Area Report Screen 41

Figure 6-9 Lane Report Screen 42

1 Introduction

The MagRemote software has been developed to allow remote monitoring and control of the pedestrian gates without having to go the physical location of the gate itself. The initial software will target pedestrian gates, particularly those with the MBC and MGC controllers. The software will be installed on a host computer connected to a Local Area Network (LAN). The software will then be able to manage and control all gates that are connected to the LAN.

2 Installation

The software requires that a MagRemote hardware dongle be inserted into an available USB port. Without this dongle the software will not work.

2.1 System Requirements

The MagRemote software application is designed to run on a PC computer running the Microsoft Windows operating system, compatible with Windows versions 7, 8 and 10, when released. The software needs to be installed on a dedicated host computer, which is to be functioning on the same LAN as the gates that the operator wishes to control/manage. The host computer is intended for use by security or system management operations team members responsible for operating, supporting and maintaining the gate(s).

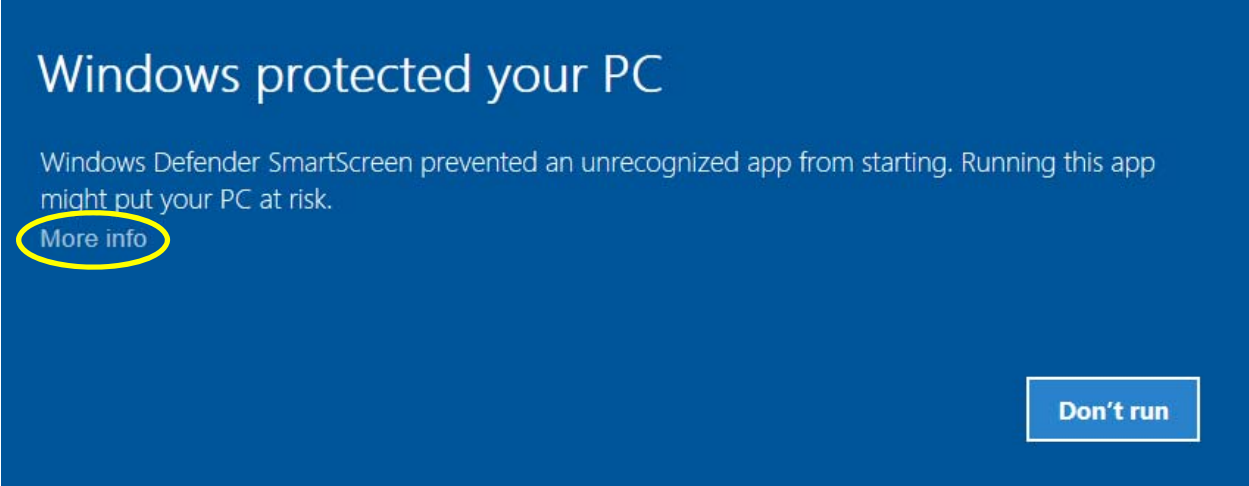
For optimal view, the customer needs to run the software on a PC and display that has a resolution of 1920 x 1080 pixels minimum.

2.2 Running the Setup Utility

The installation disk has 2 files:

1. Setup.exe
2. MagRemoteSetup.msi

Run setup.exe to start the installation.



Note: If you see this screen, click on *More info* then select *Run anyway* on the following screen. This message appears from Windows Defender because the software was copied from an outside source. If you temporarily turn off Windows Defender Real-time protection you will not see this message.

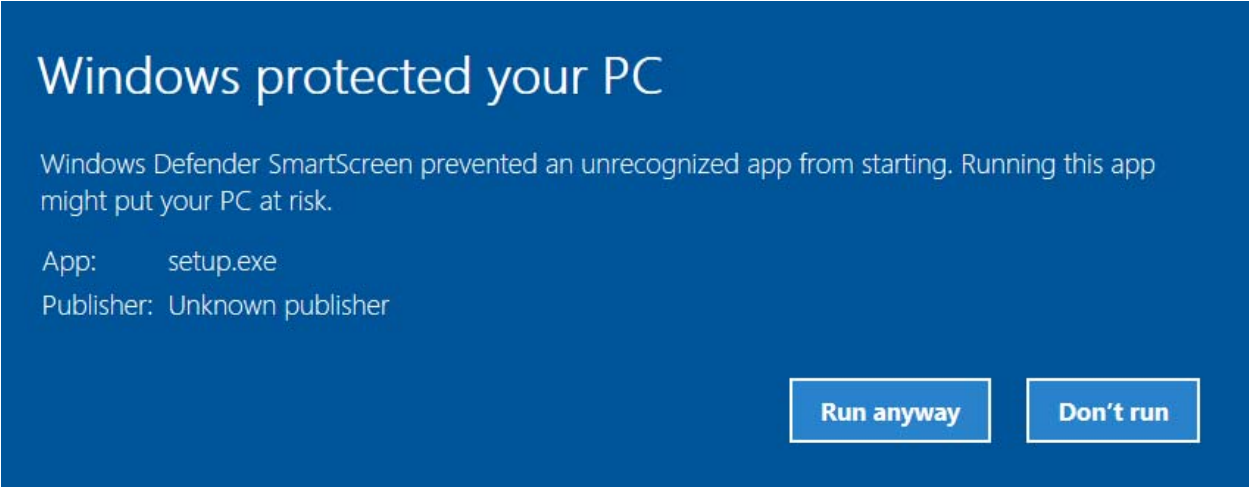


Figure 2-1 Windows Defender Messages

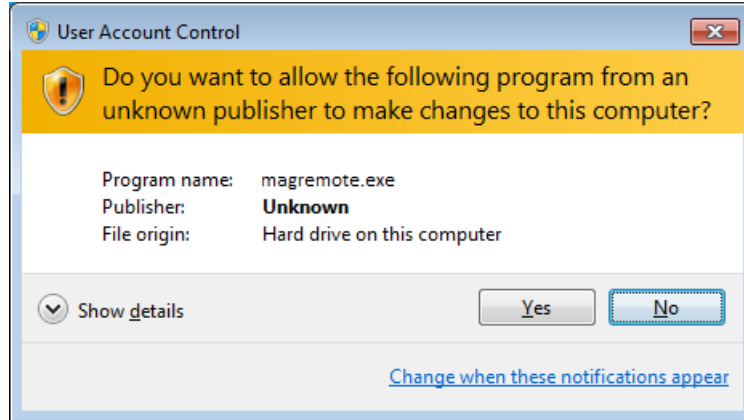


Figure 2-2 - User Account Control Warning

When the installer is launched a User Access Control warning message pops up. Choose Yes. The Program name: will be different depending on the software version.

2.3 Uninstalling the MagRemote Software

The software can be uninstalled on all platforms by going to Control Panel and choosing either *Programs and Features* or *Add/Remove Programs* depending on your operating system. Select MagRemote and click uninstall.

Note: The current installation must be uninstalled before an upgrade can be installed or the following screen will pop up during the installation:

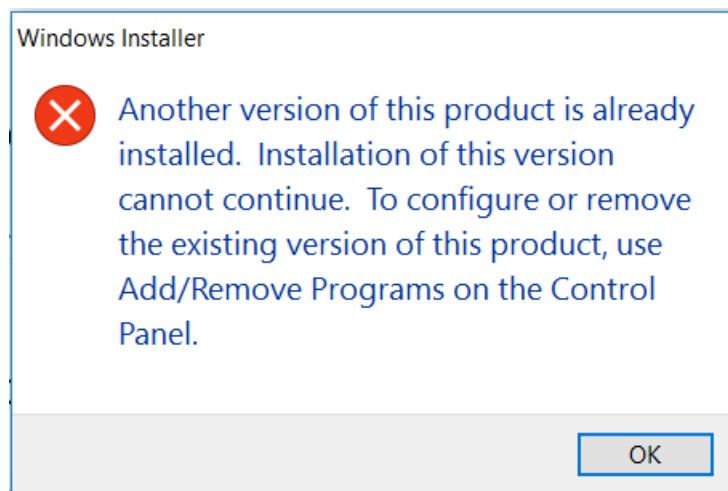
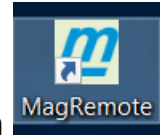


Figure 2-3 Install Warning Message

The uninstall will not remove any project or data files that have been created. The facility configuration will not change if the software is reinstalled in the same directory.

3 Running the Software



The installation software installs a shortcut icon onto your desktop. Double-click this to launch the application. You may need to refresh your desktop to see the installed icon.

3.1 Screen Layout

The software Graphical User Interface (GUI) is broken down into 4 main sections: Main Tabs, Navigation Buttons, Navigation/Alarm Bar, and Screen Work Area. See *Figure 3-1 General Screen Layout*.

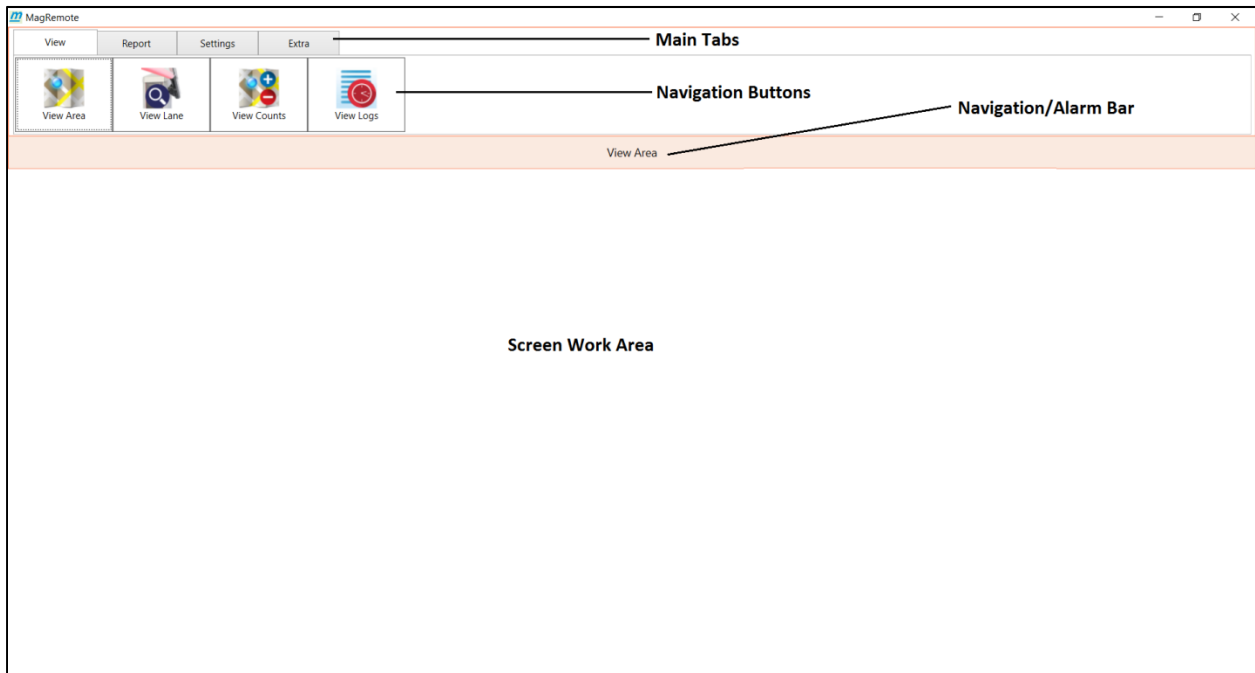


Figure 3-1 General Screen Layout

3.1.1 Main Tabs

The software is broken down into 4 general sections which are traversed using the Main Tabs.

- View – Allows managing and controlling the facility.
- Report – Allows user to view reports for the facility, all areas and all lanes. The user can select a time span for each report type.
- Settings – Where the facility is configured.
- Extra – For logging in and viewing the About Box.

3.1.2 Navigation Buttons

Each Main Tab is broken down into individual screens using the Navigation Buttons. Switching between tabs only change the Navigation Buttons, it does not change the Screen Work Area until a Navigation Button is selected.

3.1.3 Navigation/Alarm Bar

The Navigation Bar shows which Navigation Button screen is being displayed. The Screen Work Area will dynamically change according to which Navigation Button is active.

If an alarm is active the Navigation Bar changes to an Alarm Bar. See *Figure 3-2 Alarm Bar*.

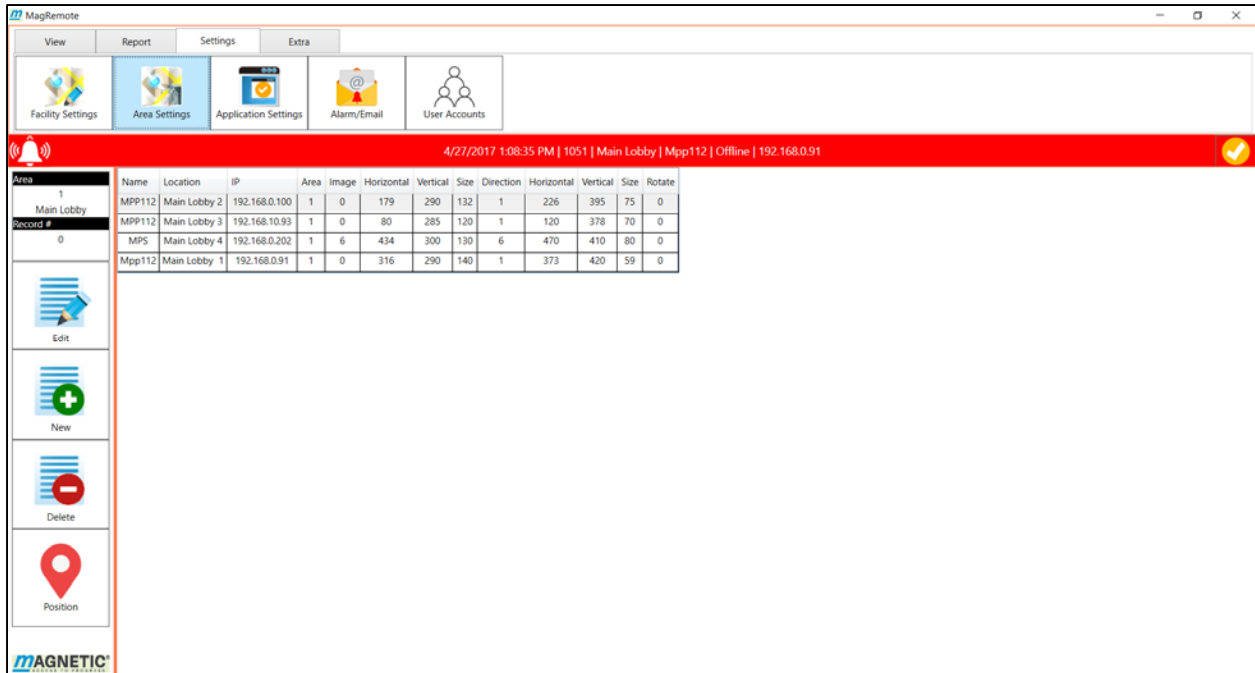


Figure 3-2 Alarm Bar

An alarm is confirmed by clicking on the orange check box to the far right of the Alarm Bar. Once all alarms have been confirmed the Alarm Bar changes back to the Navigation Bar.

4 Extra Tab – Logging In

The Extra tab is the first tab that should be selected. It contains two Navigation Buttons: Login and About. A user must be logged in before anything configuration and control operations can be performed.

4.1 Login

In order to configure a facility, a user with sufficient privileges must be logged in. Operations can be restricted based on the login userid. Configuring user privileges is discussed in *Section 5.5 – User Accounts*. The software comes with a single login with a userid FAAC and a password FAAC. This userid has full privileges. It is recommended that the password be changed immediately.

You get to the login screen by going to the Extra tab and selecting the Login option. See *Figure 4-1 User Login Screen*.

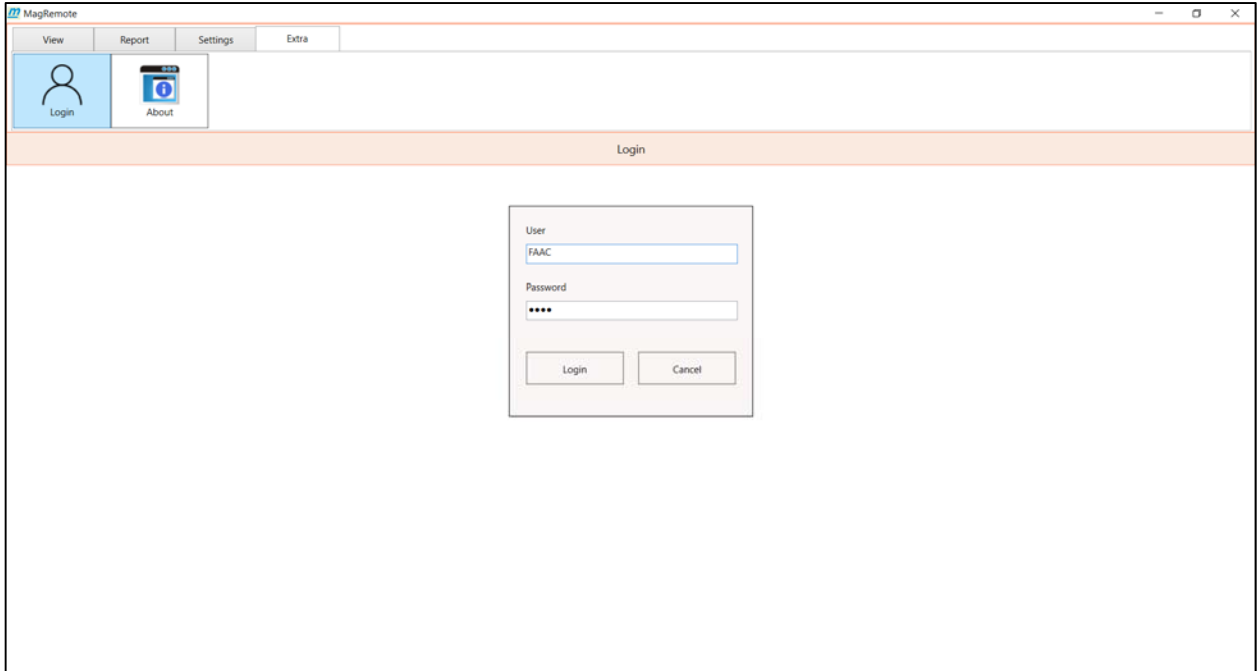


Figure 4-1 User Login Screen

Once logged in the Navigation Bar displays Welcome + (user) that logged in.

4.2 Logout

To logout click on the Login button which now displays the user. A confirmation popup appears- choose Yes.

4.3 About

The About option shows the Copyright and Version information. This manual currently documents Version 1.0.0.11.



Figure 4-2 About

5 Settings Tab – Configuring Your Facility

The Settings tab allows complete configuration of the facility. The software has the ability to control all the gates on the LAN that the host software is running on. The software allows the gates or lanes to be broken down into subsets or groups called areas. An area is defined as all lanes associated with a named group. When defining an area a background image can be assigned for a visual display effect. A network may have one area or more than one area. E.g. there may be a North Area and a South Area or an Entry Area and an Exit Area.

A facility is defined as all the areas controlled by the MagRemote host software.

5.1 Facility Settings

Facility Settings allows configuration of all the areas in the facility. Area Settings consists of a Name and the Background image associated with the area. If the User Accounts settings allow Facility Settings privilege, then the user will be able to add, edit and delete all areas within the network. An area is selected by mouse clicking on the Area Settings grid row that has the desired area Name. The Area box on the left will show which area is active. This will be the active area when adding lanes to

the area as described in *Section 5.2 Area Settings*. See *Figure 5-1 Facility Settings Screen*.

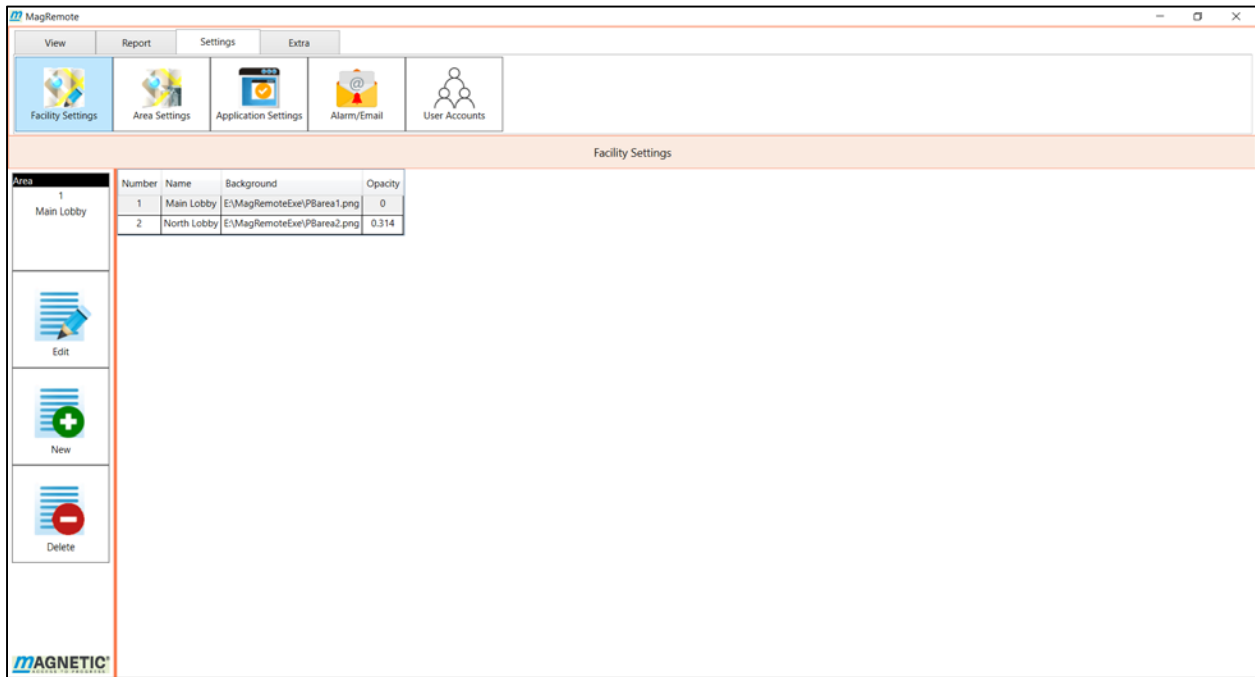


Figure 5-1 Facility Settings Screen

5.1.1 Edit

This option allows the user to change the name of the area and either select or clear the background image. An image can be selected by clicking on the familiar Windows Open File folder and traversing to the desired image. The opacity track bar allows changing of the background image transparency.

- Save – Saves the Facility Settings data and returns to the main Facility Settings screen.
- Cancel – Returns back to the main Facility Settings screen.

Note: Once either Edit or New has been selected from the main Facility Settings screen, you must click on either Save or Cancel to return to the main Facility Settings screen. See *Figure 5-2 Facility Settings New and Edit Screen*.

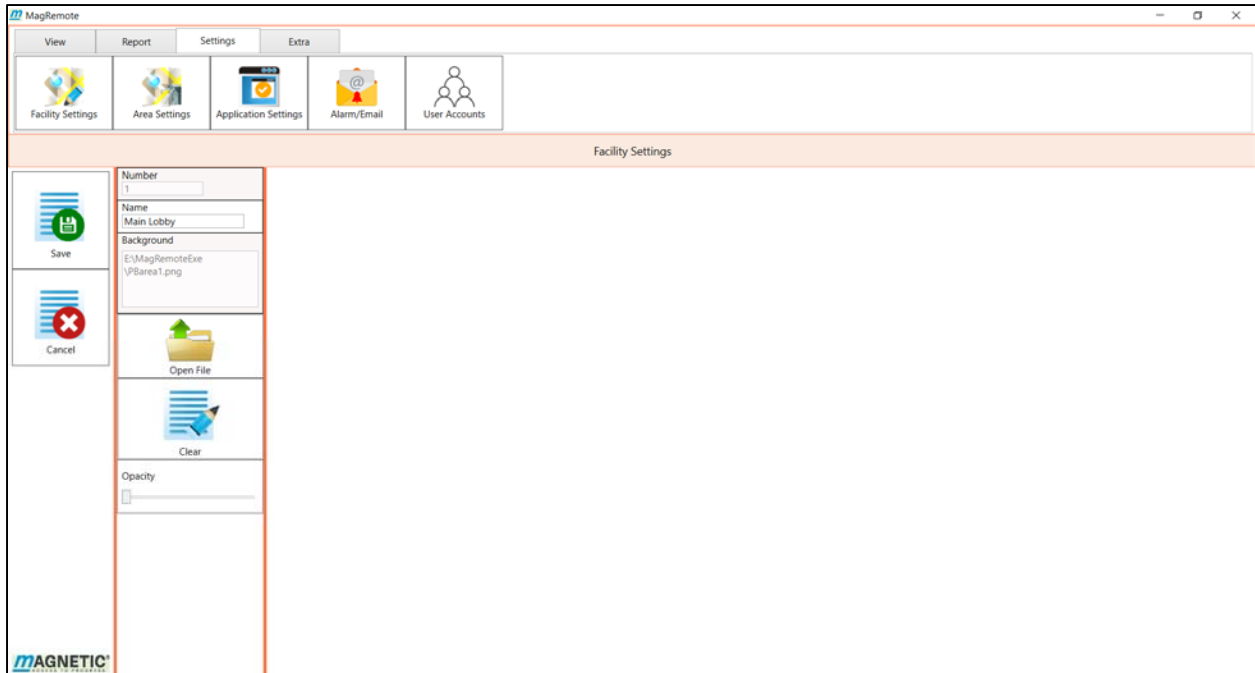


Figure 5-2 Facility Settings New and Edit Screen

5.1.2 New

The New option brings the user to the same screen as Edit with the same parameters. Once the user hits save, a new entry will be added to the main Facility Settings grid as shown in *Figure 5.1 Facility Settings Screen*.

5.1.3 Delete

To delete the last defined area from the main Facility Settings grid click on delete. A confirmation dialog will verify that you want to delete that area.

Note: Only the last area can be deleted. A message will prompt “Do You Want to Delete The Last Area?”. The selected area is ignored.

5.2 Area Settings

Area Settings is where the actual lanes are configured for each area. There is no software limit as to the number of lanes that can be added for each area. There is one gate per lane. The lane can be configured as: an Entry Lane, an Exit lane, or both. To add a lane for a desired area, the user must first make that area active using the Facility Settings option as described in *Section 5.1 Facility Settings*. See *Figure 5.3 Area Settings Main Screen*.

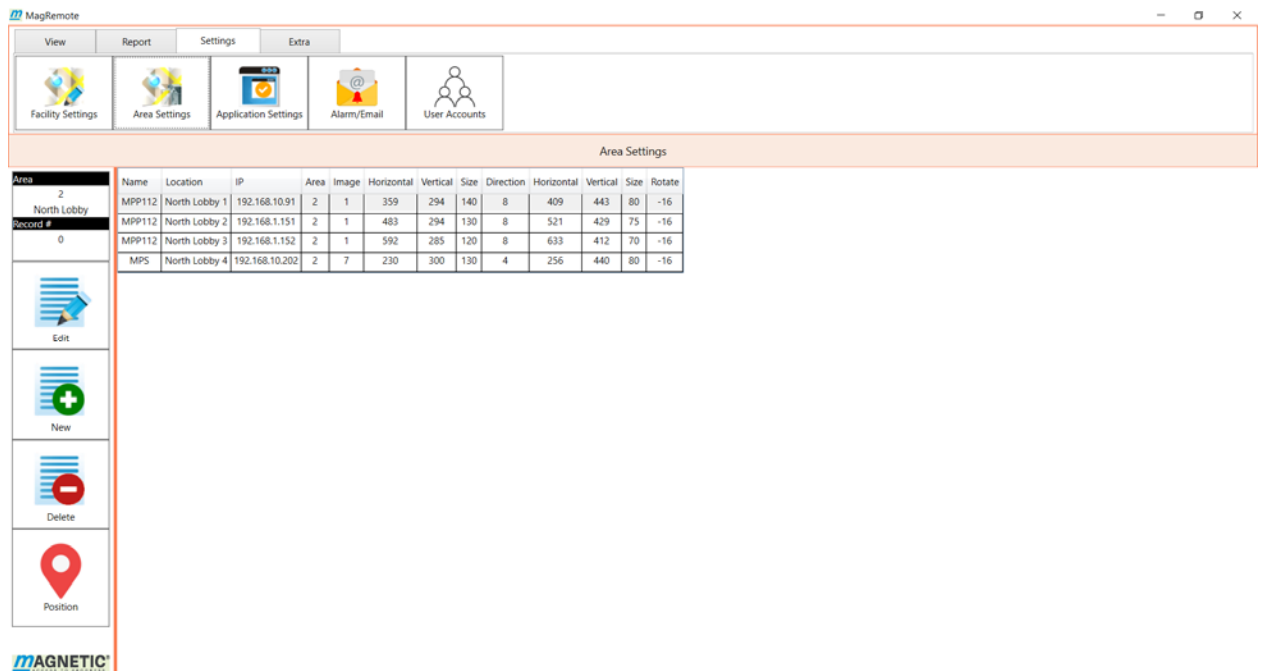


Figure 5-3 Area Settings Main Screen

5.2.1 Edit

This option allows the user to configure the Name, Location, IP Address and the image parameters for the selected lane. It also allows configuring the lane flow direction and whether occupancy data should be recorded. The edit parameters are as follows:

- Name: A description of the gate.
- Location: A description of the lane location.
- IP Address: The network IP address of the gate.

- Area: The area selected from the Facility Settings.
- Image: Select the image with the proper gate type and orientation.
- Position: The position of the gate. Note: The position icon described in *Section 5.2.4 Position* will allow the user to drag the gate and the arrow around the screen and automatically populate these fields.
- Open Left: Facing the gate- if a person enters through the gate from right to left- check whether this would be an entry or an exit from the lane. The option is used for the occupancy report.
- Occupancy: Check this item if you want the occupancy data for this gate to be included in the area occupancy count.

There are 3 navigation buttons on this screen: Save, Cancel and Position:

- Save: Saves the current information permanently and returns to the previous screen.
- Cancel: Returns to the previous screen without saving the data.
- Position: Allows drag-and-drop positioning of the selected gate as described below in *Section 5.2.4*.

Note: Once either Edit or New has been selected from the main Area Settings screen, you must click on either Save or Cancel to get back to the main Area Settings screen. See *Figure 5.4 Area Settings New and Edit Screen*.

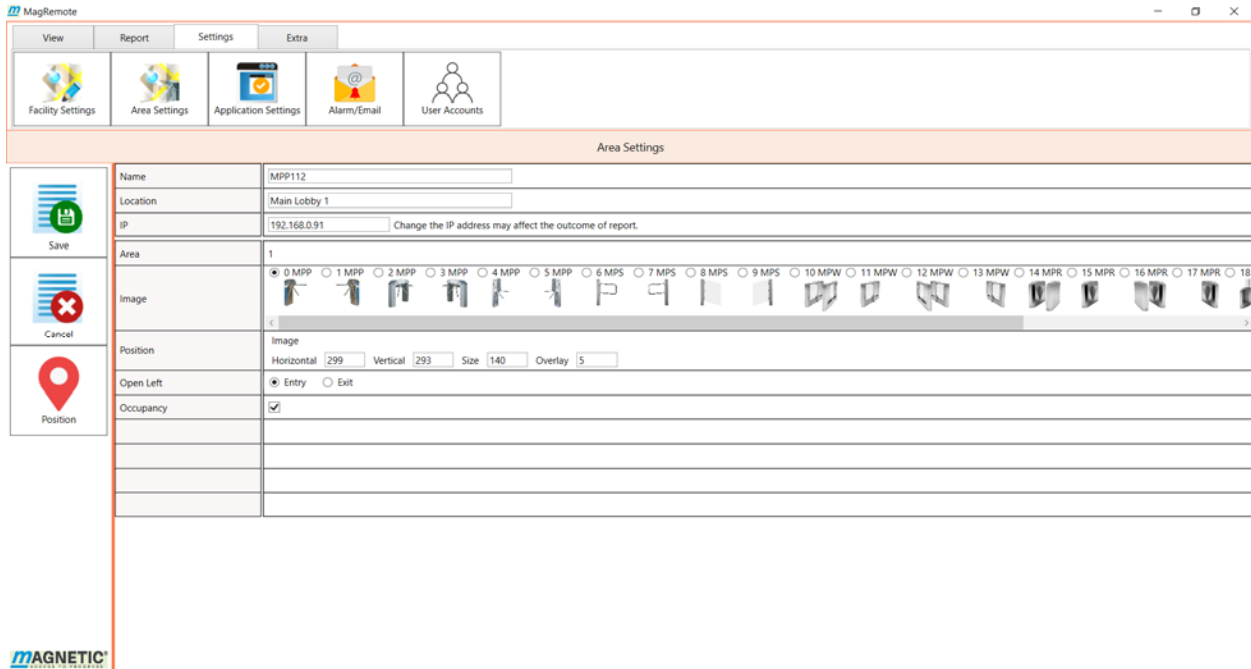


Figure 5-4 Area Settings New and Edit Screen

5.2.2 New

The New option brings the user to the same screen as Edit with the same parameters. Once the user hits save, a new entry will be added to the main Area Settings grid as shown in *Figure 5.3 Area Settings Main Screen*.

5.2.3 Delete

To delete a lane from the main Area Settings grid, click on the desired lane and click on delete. A confirmation dialog will verify that you want to delete that lane.

5.2.4 Position

The Position icon brings you to a drag-and-drop GUI screen. The software allows you to drag a gate to the desired location on the screen. This eliminates the need to type in coordinates on the Area Settings New and Edit screen. The gate that was chosen from the main Area Settings screen will be highlighted. See *Figure 5-5 Area Settings Position Screen*.

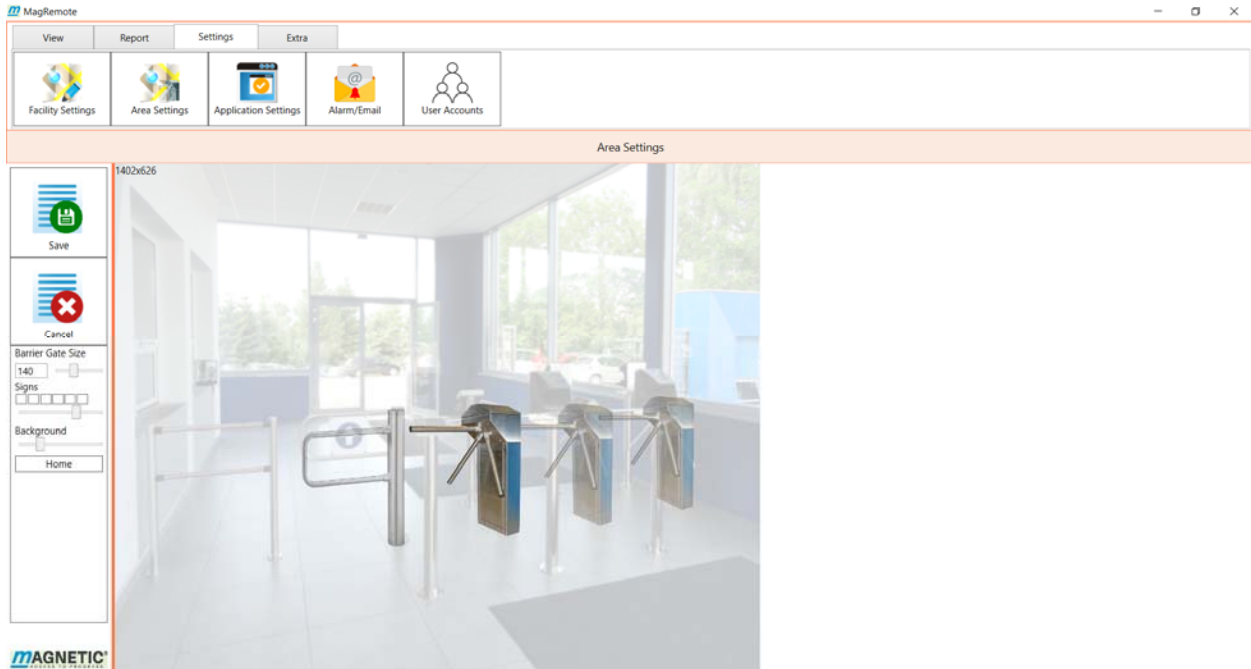


Figure 5-5 Area Settings Position Screen

There are 3 configuration parameters and 1 button on this screen:

- **Barrier Gate Size:** Increase or decreases the size of the gates image.
- **Signs:** There are 6 visual indicators. The check boxes will display the associated visual indicator. The visual indicators represent the current status of the gate. See *Figure 5.6 Visual Indicators*.
- **Slider Bar:** Sets the global transparency for all visual indicators.

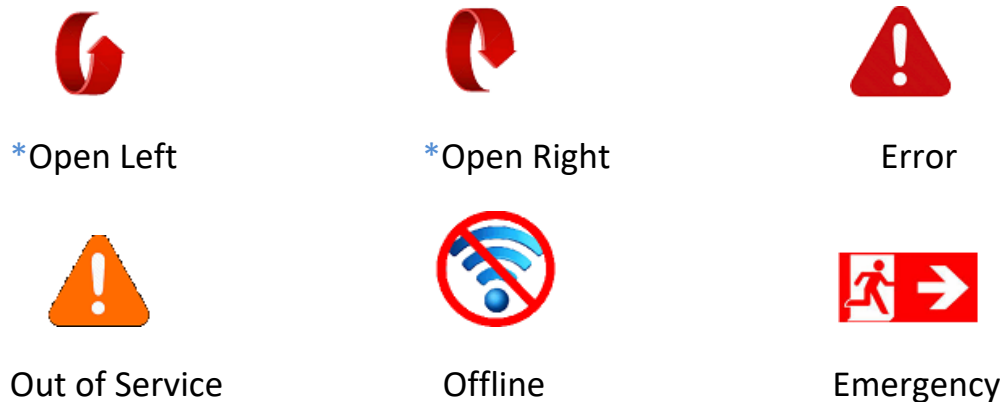


Figure 5-6 Visual Indicators

- Background: Changes the transparency of the background image.
 - Home: Moves the selected gate to the upper left corner of the image.
- * Open Left and Open Right symbols change depending on the gate orientation as discussed in section 6.1.2.1 *Open Left Free On*.

5.3 Application Settings

The Application Settings screen configures the global settings for all users:

- Language: The current release only supports English.
- Pedestrian – Vehicle: The current release only supports pedestrian.
- Alert Sound: Selects the audio file that plays for an alert event or an emergency. The folder option allows browsing for an audio file. The play and pause buttons control the playback of the selected audio file.
- Reset Counts Time: Chooses a time to reset the accumulated counts of the selected counter variables. Counter variables are viewed and selected from the View tab as described in *Section 6.3 View Counts*.
- Facility Name: A description of the facility that the software is monitoring. This is used for reporting purposes
- Auto Print Daily Report: This option allows configuring a time to print a daily report.
- Select Printer Before Print: This option displays the Choose Printer dialog box before a report is printed. This option must be checked if the printer used for printing the report is not the default.
- Count Option: The software polls each gate every 300 ms to for gate activity. A high speed lane that has entries or exits faster than

300 ms might lose count data. The count option can be configured as follows:

Option 1: No Count - Disables counts all together.

Option 2: Remote Count - Allows the software to maintain counts using the existing gate hardware. It is not intended for high speed traffic.

Option 3: Local Count – Is currently not implemented. It will allow for a counter module to be added to the gate and perform its own counting. The software can then poll this module for the count data. See *Figure 5.7 Application Settings Screen*.

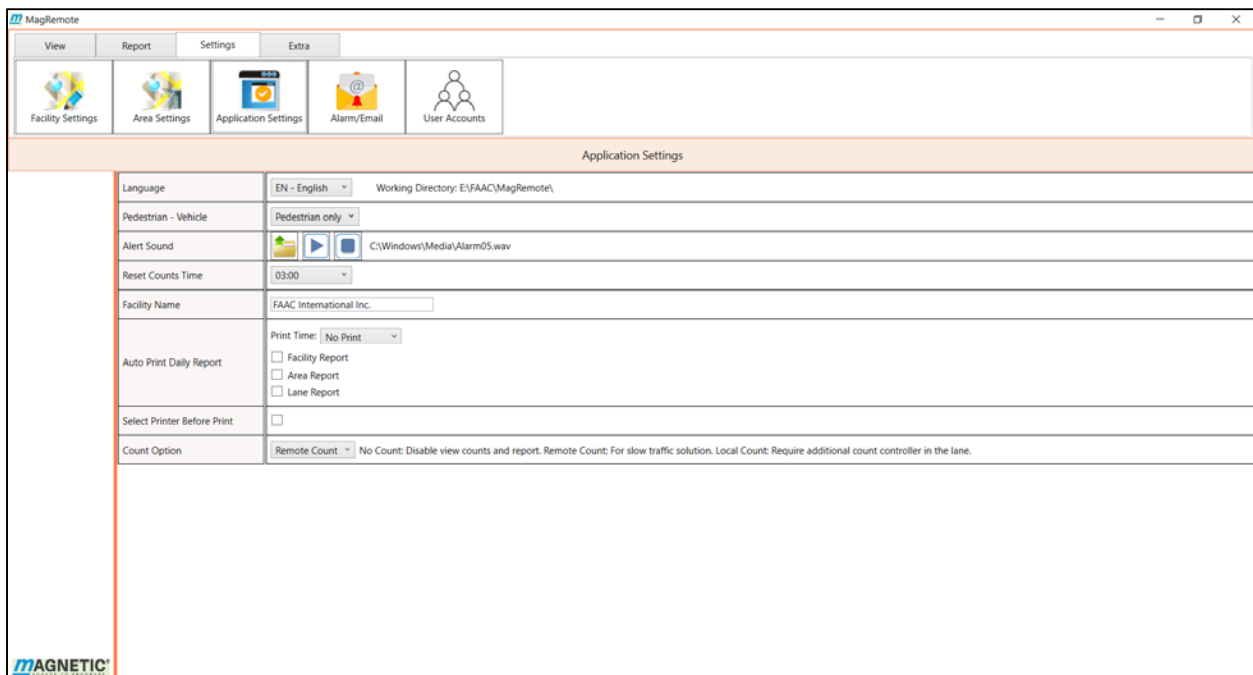


Figure 5-7 Application Settings Screen

5.4 Alarm/Email

This option allows configuring a notification management system. The notifications can be viewed by the software locally or emailed via a cloud

based email server. The Alarm/Email screen is divided into 3 sections: The Host Server parameters, the Email Recipients grid, and the Notifications table. See *Figure 5.8 Alarm/Email Configuration*.

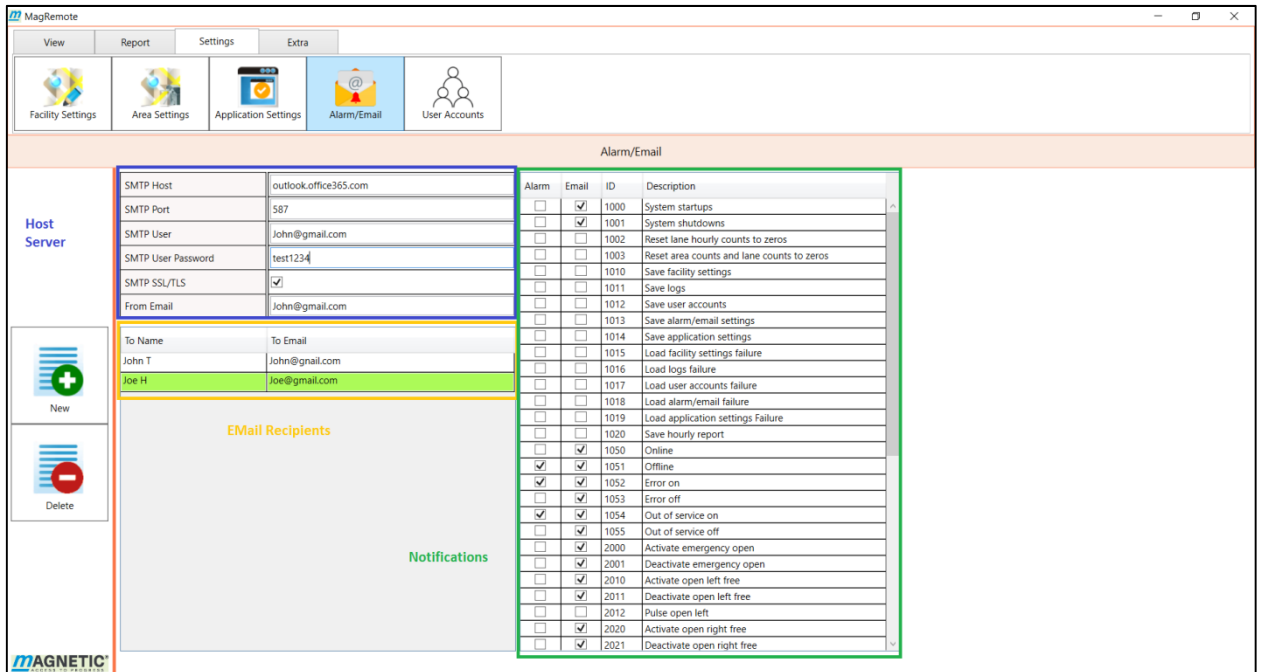


Figure 5-8 Alarm/Email Configuration

5.4.1 Configuring the Host Email Server

- SMTP Port: Port address of the email server.
- SMTP User: The user name created on the email server.
- SMTP User Password: The password created on the email server.
- SMTP SSL/TLS: Sends email using encryption. Most cloud based email servers require this box to be checked.
- From Email: This will be the from address for the email that gets sent.

5.4.2 Setting up Email Clients

Any number of users can be configured for email notifications.

5.4.2.1 New

Adds a new row to the Email Recipients grid:

- To Name: The name of the person the email is sent to.
- To Email: The email address of the person the email is sent to.

5.4.2.2 Delete

Deletes the highlighted row from the Email Recipients grid.

5.4.3 Configuring Alarms and Email Notifications

Alarms are messages that appear in the GUI Alarm Bar. The messages can be filtered using the alarm column in the notifications grid. The email column determines which messages get emailed to the users in the Email Recipients grid. All messages are logged and can be viewed using the View Logs screen as described in *Section 6.4 View Logs*.

The notifications table contains 4 columns:

- Alarm: Any item checked will play the alarm sound that was configured in the Application Settings screen. An Alarm Bar will replace the Navigation Bar and the user can view the alarm by clicking on the Alarm Bar. Clicking on the Alarm Bar also clears the alarm.
- Email: Any item checked will send out an email notification to all users in the recipients list.
- ID: The assigned ID of the notification.
- Description: A description of the notification.

5.4.3.1 Notifications by ID

- 1000 – 1001: When the software is launched or closed.
- 1002 – 1003: When counts are reset.
- 1010 – 1014: When a system configuration is changed and saved.
- 1015 – 1019: When system component fails to load.
This is usually a file not found or invalid format.



- 1020: When the hourly report gets saved. This is done by the system every night at midnight.
- 1050 – 1051: When network connectivity changes.
- 1052 – 1053: When the gate goes into or out of error mode. When the gate goes into error mode an alarm will sound for specified period. It then retries the operation and if successful it clears the error.
- 1054 – 1055: The status of the gate. If the gate encounters a fatal error it will set the gate to Out of Service.
- 2000 – 2022: When the end user performs any action related to opening and closing a gate.
- 2200 – 2212: When the end user reconfigures any area or lane parameters.
- 2220 – 2222: When the end user changes login information.
- 2230 – 2235: When auto print or the end user prints a report.
- 2240 – 2241: User logging on and off the system.
- 2300: When the end user confirms a system alarm.

5.5 User Accounts

The User Accounts option allows you to add, delete and edit users. You get to the User Accounts screen by selecting the Settings tab and clicking on User Accounts. This screen shows the privileges of all Users. See *Figure 5.9 User Accounts*.

Note: You must have User Accounts privilege to view this screen.

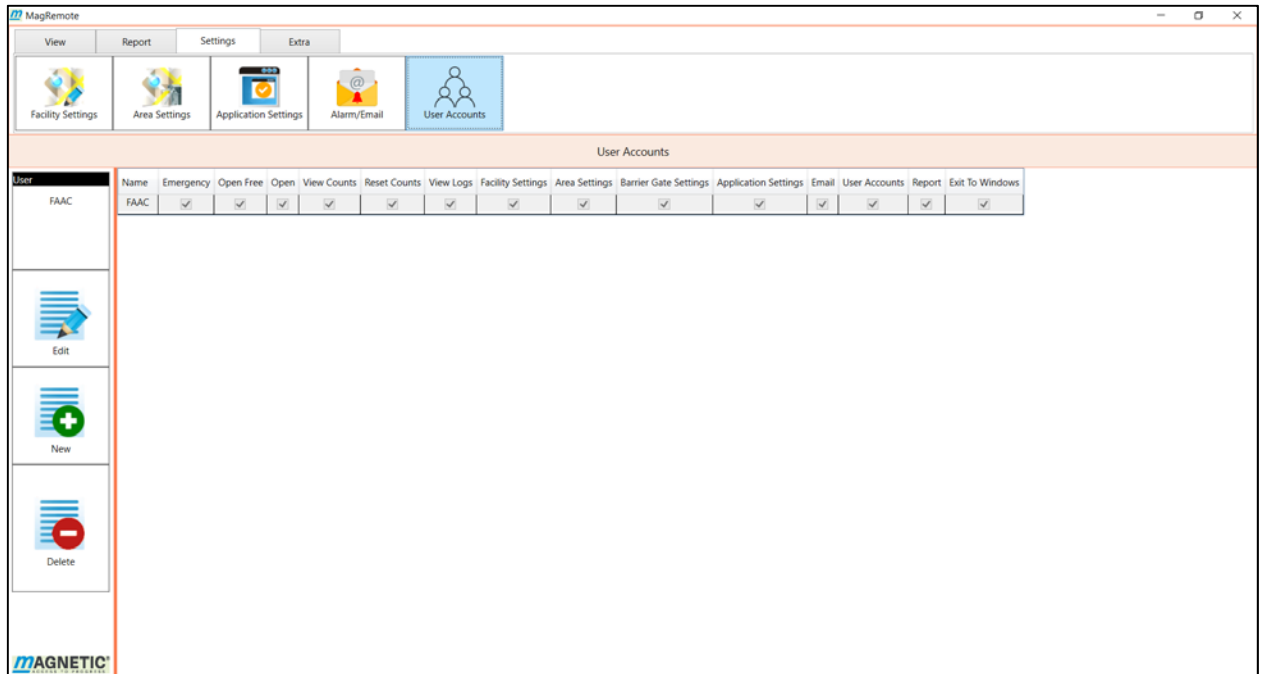


Figure 5-9 User Accounts

5.5.1 Edit

Selecting Edit allows you to change the privileges of the selected user. You select a user by mouse clicking on the user's row in the User Accounts grid. The User box on the left shows the active user.

Note: Once either the New or Edit screen has been selected you must click either Save or Cancel to get back to the main User Accounts screen. See *Figure 5.10 User Accounts New and Edit Screen*.

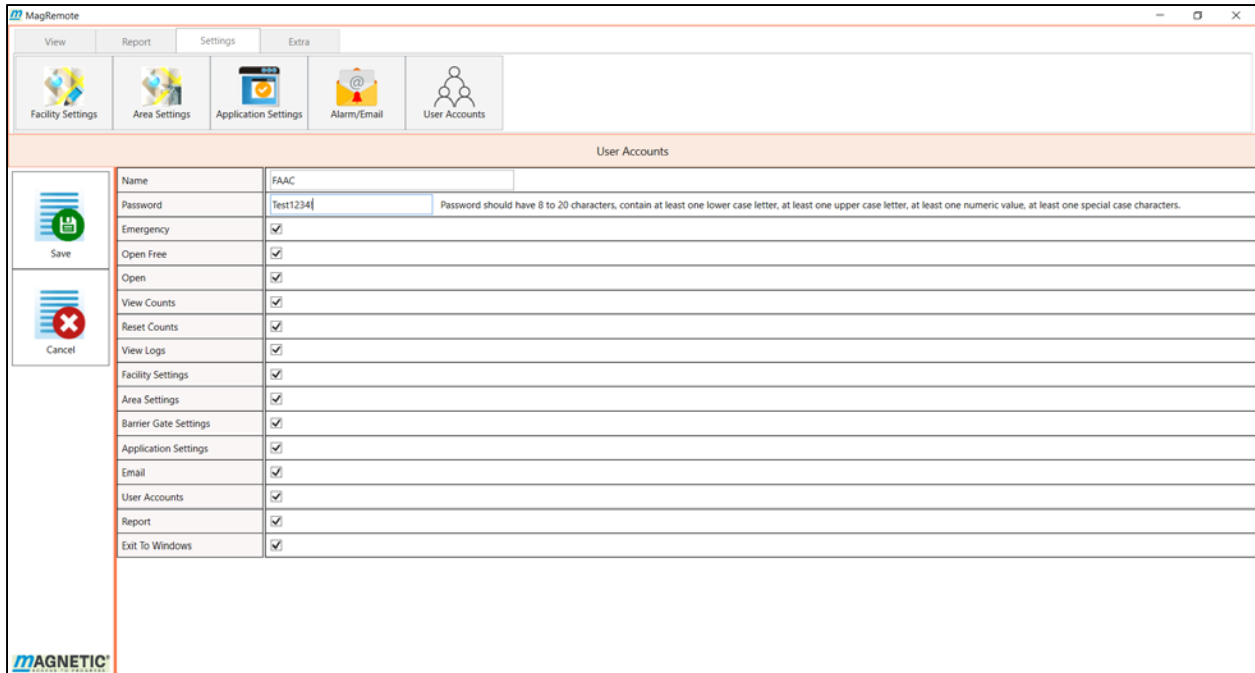


Figure 5-10 User Accounts New and Edit Screen

This option allows users to be configured with any or all of the following privileges.

- **Emergency:** Allows the user to open all gates in the selected area allowing unrestricted entry and exit.
- **Open Free:** This allows the user to unlock a gate and allow traffic to enter an area without a charge.
- **Open:** Allows the user to open a gate at any time for a configurable time interval.
- **View Counts:** Allows the user to view the number of entries, exits and system messages the gate has performed.
- **Reset Counts:** Allows the user to reset the entry, exit and the system generated counts to 0.
- **View Logs:** Allows the user to view the activity log file.
- **Facility Settings:** Allows the user to name and set the background image for the areas within the facility.

- Area Settings: Allows the user to configure the network parameters and the background image for each lane.
- Barrier Gate Settings: Allows the user to configure all the individual gates hardware settings.
- Application Settings: Allows the user to configure settings used by the software such as alarm sounds, report configuration and count reset options.
- Email: Allows configuring email notification parameters.
- User Accounts: Allows adding, edit and viewing user accounts.
- Report: Allows the user to configure and view reports for the lane, the area and the entire facility.
- Exit to Windows: This option allows the user to close the software and exit to Windows.

5.5.2 **New**

Allows a user to add and configure new user accounts.

5.5.3 **Delete**

Allows a user to delete a user account.

6 **View Tab – Monitoring and Controlling Your Facility**

Once a facility is configured the end user can monitor and control the lanes using the View tab. The View Area option allows the end user to monitor and control all the gates for the entire facility, or a selected area. The View Lane option only allows monitoring and controlling one gate at a time.

6.1 **View Area**

There are 2 modes for the View Area option: List Mode and Map Mode.

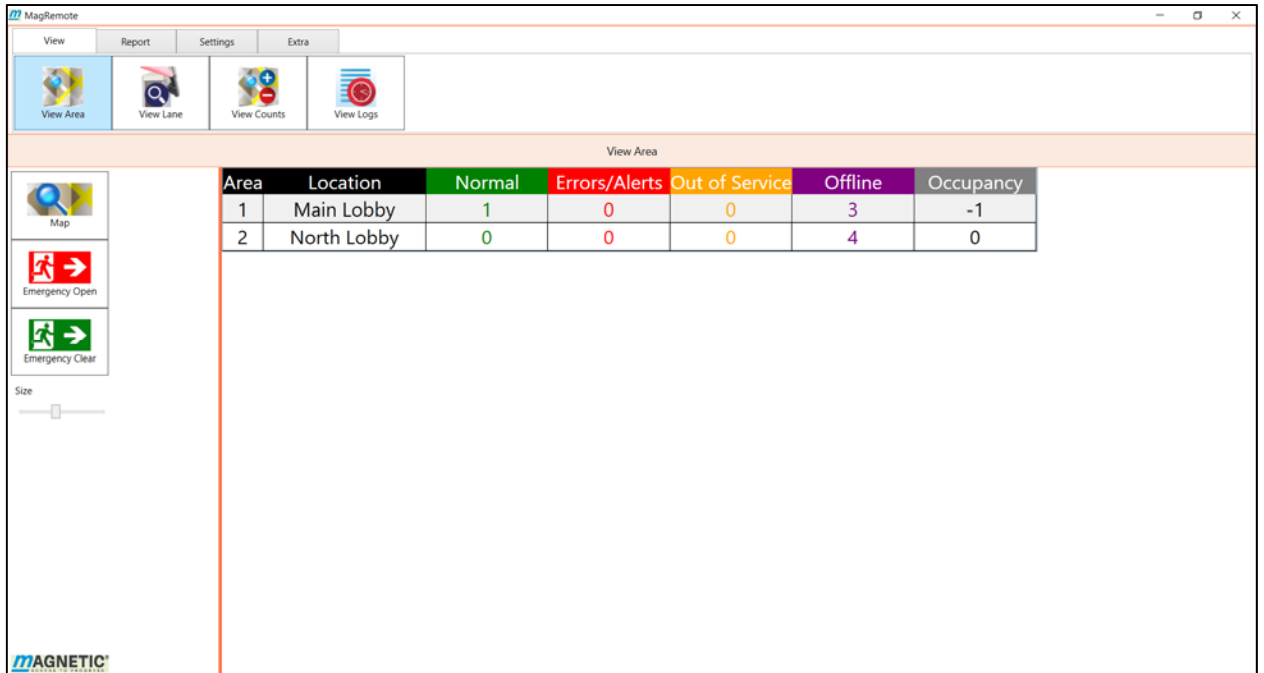


Figure 6-1 View Area List Mode

6.1.1 View Area List Mode

The View Area List Mode shows all areas for the entire facility in a data grid. The list also shows the status summary of all the gates in the area as described in View Area Map Mode in *Section 6.1.2 View Area Mode*. There are 3 buttons and 1 slider control on the list screen:

- Map- Switches the view to View Area Map Mode. View Area Map Mode will show a graphical image of all the gates for the area selected in the data grid.
- Emergency Open- This is used for emergency situations. By clicking on Emergency Open while in View Area List Mode, all gates for the entire facility will be unlocked allowing unrestricted access.
- Emergency Clear- Resets all gates for the entire facility back to their normal operation.
- Size – Resizes the View Area grid.

You can switch to View Area Map Mode by selecting the desired area in the Area data grid and clicking on the Map Icon or by double clicking the desired area in the data grid.

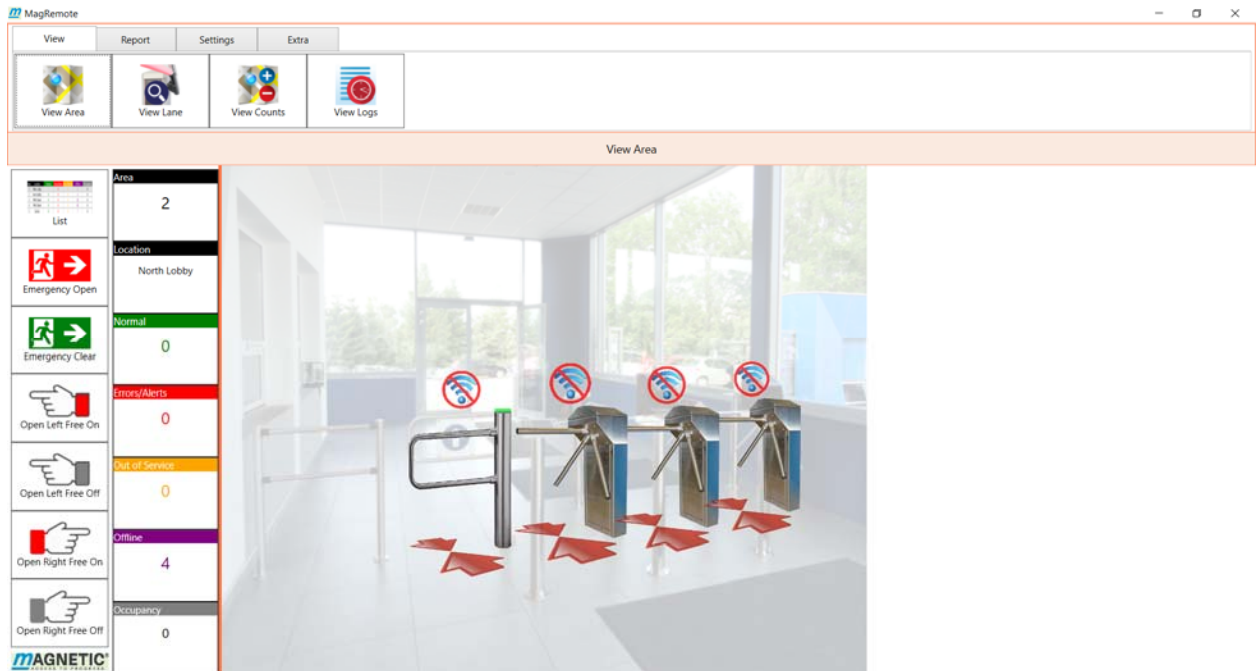


Figure 6-2 View Area Map Mode

6.1.2 View Area Map Mode

View Area Map Mode allows monitoring and controlling all gates for a selected area. The area is selected from the View Area list grid while in List Mode. This Screen Work Area is divided into 3 sections: The command bar, status messages, and the view area diagram.

6.1.2.1 View Area Commands

- List - Switches the screen to View Area List Mode.
- Emergency Open – Will open all gates in the selected area allowing unrestricted entry and exit. The Emergency visual indicator will be displayed by each gate that is in Emergency Open state.

- Emergency Clear – Resets all gates in the area to their normal operations.
- Open Left Free On – Allows all area gates free access to open to the left. This allows unrestricted traffic flow in that direction. When Open Left Free is on, the arrow indicating which direction is free turns green. The arrow that turns on depends on the orientation of the gate.



Open Left Free On



Open Right Free On



Open Left Free On



Open Right Free On

- Open Left Free Off – Resets all area gates to restricted traffic flow to the left.
- Open Right Free On - Allows all area gates free access to open to the Right. This allows unrestricted traffic flow in that

direction. A green arrow is displayed visually showing that Open Right Free is on.

- Open Right Free Off - Resets all area gates to restricted traffic flow to the right.

The visual indicators discussed in *Section 5.2 Area Settings* are displayed for each lane based on the last status message received from the gate. If a gate is offline only the Offline visual indicator will be displayed.

6.1.2.2 View Area Status

The status fields report the selected area location and a summary of all area gates last status message. If a given gate is offline then only the offline count increases since no other status messages are received. It is possible that a given gate may be in an error state or out of service. The software cannot determine this until the gate goes online.

- Area – The area ID from the list view grid.
- Location – The location description from the list view grid.
- Normal – The number of gates that are online without warnings or error messages.
- Errors/Alerts – The number of gates the reported an error on the last status. The error indicator is a digital input line. A gate error indicator can either be on or off. No error codes are received from the gate.
- Out of Service – The number of gates that went out of service due to an internal error.
- Offline – The total number of gates that are not connected to the network.
- Occupancy – The count of the (entries – exits) of all gates that have been configured to count occupancy data as described in *Section 5.2 Area Settings*.

6.1.2.3 View Area Diagram

The view area diagram displays the gate position, the access flow direction, and any Visual Indicators for all lanes. You can click on any gate to send commands to this gate only. All other gates become dimmed in the diagram. This is a shortcut from View Area Map Mode to View Lane Map Mode for the selected gate. The Status Bar will now display View Lane. View Lane is for one lane only. You can activate another gate by clicking on any gate in the diagram. To switch back to View Area map mode click on the area map icon in the command bar. Clicking on the View Area Navigation Button will produce the same results.

6.2 View Lane

View Lane allows monitoring and controlling a single lane. There are 2 modes for the View Lane option: View Lane List Mode and View Lane Map Mode.

6.2.1 View Lane List Mode

The View Lane List Mode screen shows all lanes for the area selected from the View Area data grid as described in section 6.1 View Area. It shows the configuration data, the status from the last status message received, and the lane counts. There is 1 button and 1 slider control on the main screen

- Map – Switches back to View Lane Map Mode with the selected gate highlighted. The Lane Map Mode will show the gate parameters for the lane selected in the data grid.
- Size – Resizes the View Lane grid.

You can switch to View Lane Map Mode by clicking on the desired lane in the Area grid and clicking on the Map icon on the command bar.

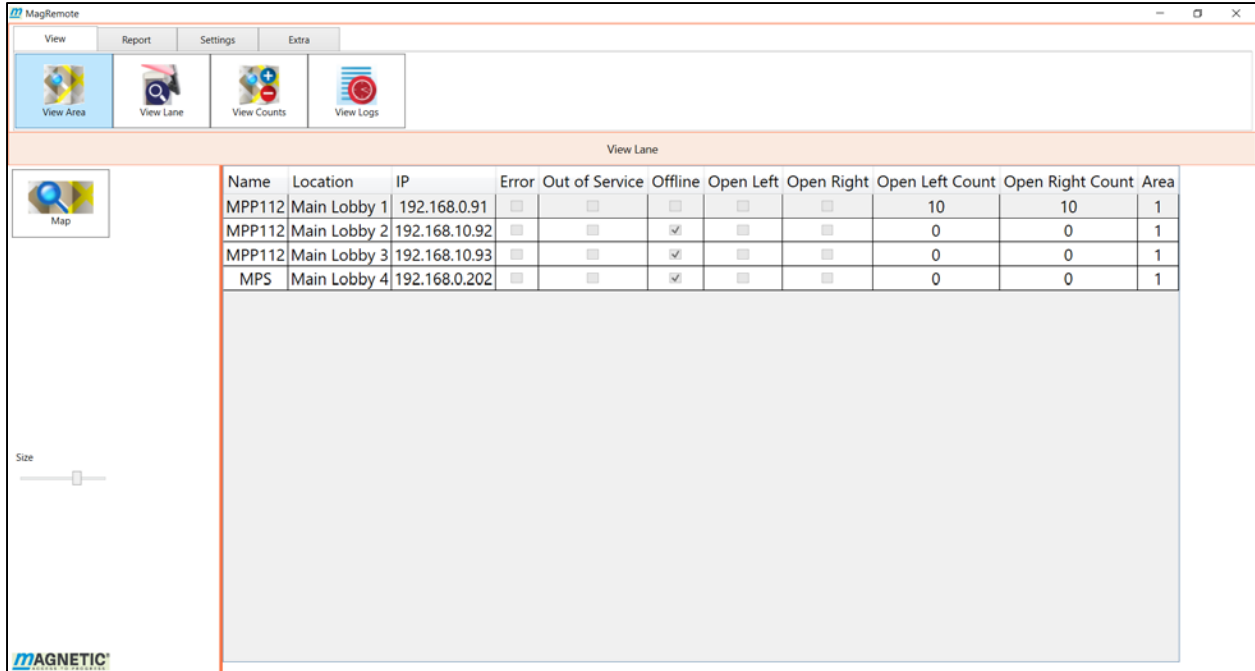


Figure 6-3 View Lane List Mode

6.2.2 View Lane Map Mode

The View Lane Map Mode displays a graphical image of the lane with the selected gate highlighted. This screen can be divided into 3 sections: The Command Bar, Status Messages, and the View Lane Diagram.

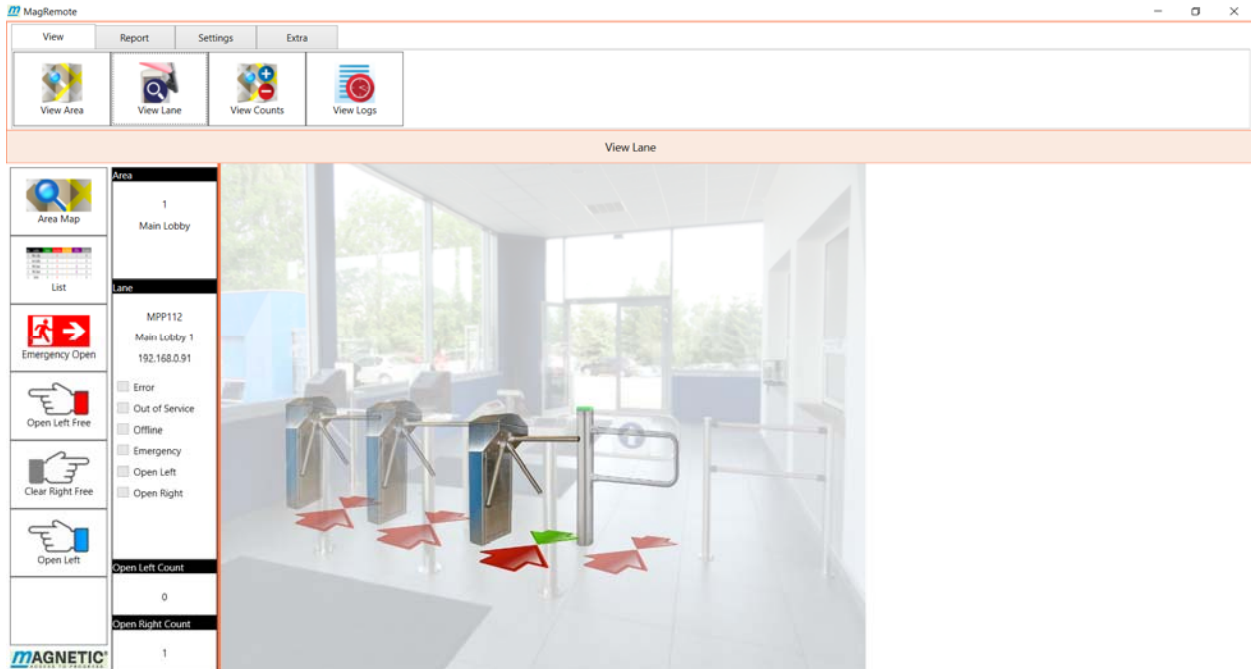


Figure 6-4 View Lane Map Mode

6.2.2.1 View Lane Commands

- Area Map – Switches the screen to View Area Map Mode as described in *Section 6.1 View Area*. The navigation bar will change to View Area. This allows for quickly changing the selected lane.
- List - Switches the screen to View Lane List Mode.
- Emergency Open – Will open selected gate allowing a configurable time period for unrestricted entry and exit.
- Emergency Clear – Resets the lane gates to its normal operation.
- Open Left Free On – Allows the lane gate free access to open to the left. This allows unrestricted traffic flow in that direction. A green arrow visual indicator will be displayed on the selected gate.
- Open Left Free Off – Resets the lane gate to restricted traffic flow to the left.

- Open Right Free On - Allows the lane gate free access to open to the Right. This allows unrestricted traffic flow in that direction.
- Open Right Free Off - Resets all area gates to restricted traffic flow to the right. A green arrow visual indicator will be displayed on the selected gate.

6.2.2.2 View Lane Status

The status area shows the current state of the lane.

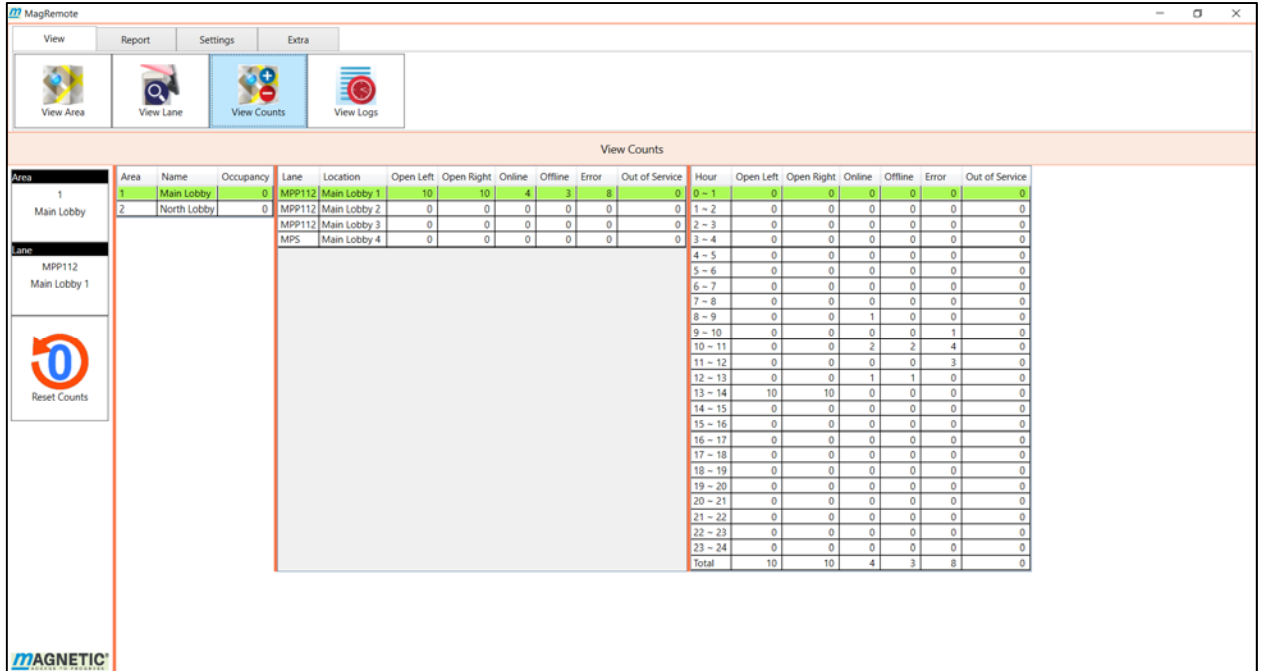
- Area Box – The area id and area description of the lane.
- Lane – The lane name, area description, ip address and status of the lane.
- Open Left Count – The number of times the lane has opened left since the last count reset.
- Open Right Count – The number of times the lane has opened right since the last count reset.

6.2.2.3 View Lane Diagram

Shows lane position and flow direction for the selected area with the selected lane being highlighted.

6.3 View Counts

All lane activity and status messages are summed for each lane. The View Counts screen allows viewing a summary of the counts that were received since the last reset counts command was issued. See *Figure 6.5 View Counts Main Screen*.



View Counts																	
Area	Name	Occupancy	Lane	Location	Open Left	Open Right	Online	Offline	Error	Out of Service	Hour	Open Left	Open Right	Online	Offline	Error	Out of Service
1	Main Lobby	0	MPP112	Main Lobby 1	10	10	4	3	8	0	0-1	0	0	0	0	0	0
2	North Lobby	0	MPP112	Main Lobby 2	0	0	0	0	0	0	1-2	0	0	0	0	0	0
			MPP112	Main Lobby 3	0	0	0	0	0	0	2-3	0	0	0	0	0	0
			MPS	Main Lobby 4	0	0	0	0	0	0	3-4	0	0	0	0	0	0
											4-5	0	0	0	0	0	0
											5-6	0	0	0	0	0	0
											6-7	0	0	0	0	0	0
											7-8	0	0	0	0	0	0
											8-9	0	0	1	0	0	0
											9-10	0	0	0	0	1	0
											10-11	0	0	2	2	4	0
											11-12	0	0	0	0	3	0
											12-13	0	0	1	1	0	0
											13-14	10	10	0	0	0	0
											14-15	0	0	0	0	0	0
											15-16	0	0	0	0	0	0
											16-17	0	0	0	0	0	0
											17-18	0	0	0	0	0	0
											18-19	0	0	0	0	0	0
											19-20	0	0	0	0	0	0
											20-21	0	0	0	0	0	0
											21-22	0	0	0	0	0	0
											22-23	0	0	0	0	0	0
											23-24	0	0	0	0	0	0
											Total	10	10	4	3	8	0

Figure 6-5 View Counts Main Screen

6.3.1 View Counts Diagram

The view counts diagram is divided into three grids.

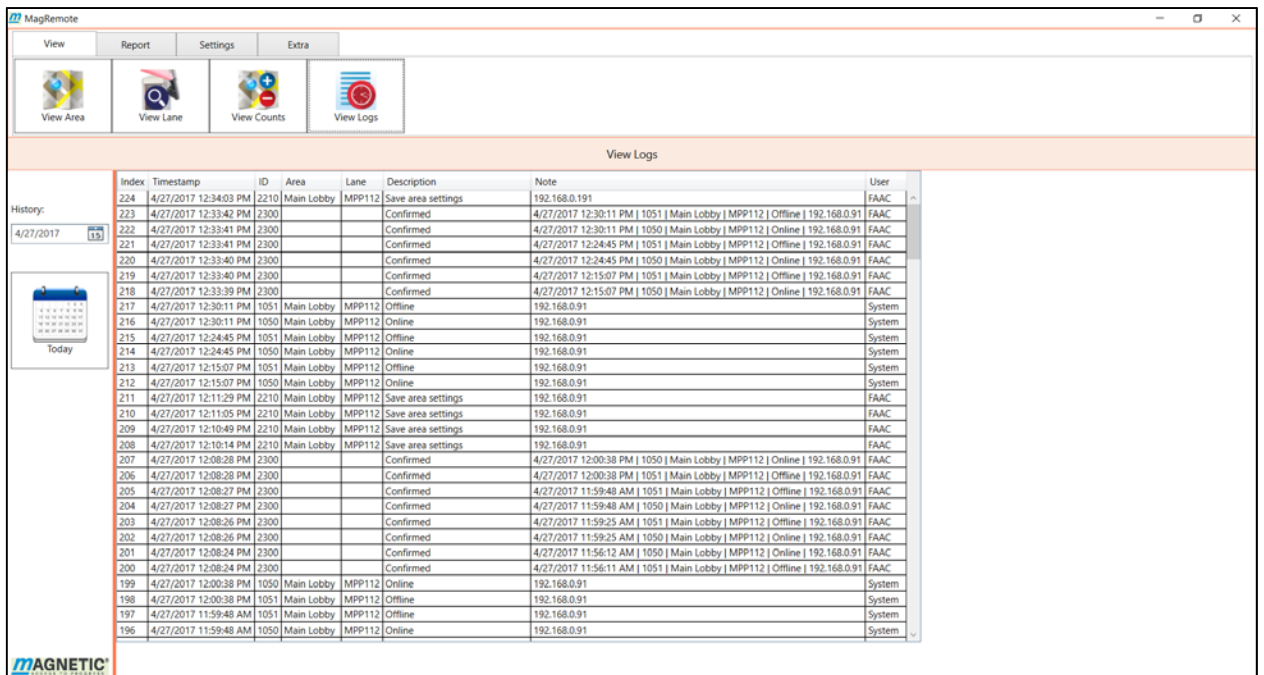
- Area Grid- The Area grid contains all areas defined for the facility. It contains the area name and the occupancy counts associated with this area. An area is selected by clicking on the row with the desired area name in the grid. The area box on the left will display which area has been selected.
- Lane Grid – Lists all lanes for the area selected in the Area grid. You can view counts for a lane by clicking on the row of the desired lane. The Lane grid contains a summary of all counts for the lane since the last reset counts. The Lane box on the left will display the lane name and lane location for the selected lane.
- Hourly Grid - Has an hourly breakdown of the message and status counts for the selected lane.

6.3.2 Reset Counts

The Reset Counts button will reset all counts to 0 for all lanes in the facility. The hourly bin counts for the Reports will not be reset by the Reset Counts button.

6.4 View Logs - Monitoring the System Status

The MagRemote software logs all system messages outlined in *Section 5.4.3 Configuring Alarms and Email Notifications*. The logs messages are not configurable as all messages are logged. See *Figure 6.6 View Logs Main Screen*.



Index	Timestamp	ID	Area	Lane	Description	Note	User
224	4/27/2017 12:34:03 PM	2210	Main Lobby	MPP112	Save area settings	192.168.0.191	
223	4/27/2017 12:33:42 PM	2300			Confirmed	4/27/2017 12:30:11 PM 1051 Main Lobby MPP112 Offline 192.168.0.91	FAAC
222	4/27/2017 12:33:41 PM	2300			Confirmed	4/27/2017 12:30:11 PM 1050 Main Lobby MPP112 Online 192.168.0.91	FAAC
221	4/27/2017 12:33:41 PM	2300			Confirmed	4/27/2017 12:24:45 PM 1051 Main Lobby MPP112 Offline 192.168.0.91	FAAC
220	4/27/2017 12:33:40 PM	2300			Confirmed	4/27/2017 12:24:45 PM 1050 Main Lobby MPP112 Online 192.168.0.91	FAAC
219	4/27/2017 12:33:40 PM	2300			Confirmed	4/27/2017 12:15:07 PM 1051 Main Lobby MPP112 Offline 192.168.0.91	FAAC
218	4/27/2017 12:33:39 PM	2300			Confirmed	4/27/2017 12:15:07 PM 1050 Main Lobby MPP112 Online 192.168.0.91	FAAC
217	4/27/2017 12:30:11 PM	1051	Main Lobby	MPP112	Offline	192.168.0.91	System
216	4/27/2017 12:30:11 PM	1050	Main Lobby	MPP112	Online	192.168.0.91	System
215	4/27/2017 12:24:45 PM	1051	Main Lobby	MPP112	Offline	192.168.0.91	System
214	4/27/2017 12:24:45 PM	1050	Main Lobby	MPP112	Online	192.168.0.91	System
213	4/27/2017 12:15:07 PM	1051	Main Lobby	MPP112	Offline	192.168.0.91	System
212	4/27/2017 12:15:07 PM	1050	Main Lobby	MPP112	Online	192.168.0.91	System
211	4/27/2017 12:11:05 PM	2210	Main Lobby	MPP112	Save area settings	192.168.0.91	FAAC
210	4/27/2017 12:11:05 PM	2210	Main Lobby	MPP112	Save area settings	192.168.0.91	FAAC
209	4/27/2017 12:10:49 PM	2210	Main Lobby	MPP112	Save area settings	192.168.0.91	FAAC
208	4/27/2017 12:10:14 PM	2210	Main Lobby	MPP112	Save area settings	192.168.0.91	FAAC
207	4/27/2017 12:08:28 PM	2300			Confirmed	4/27/2017 12:00:38 PM 1050 Main Lobby MPP112 Online 192.168.0.91	FAAC
206	4/27/2017 12:08:28 PM	2300			Confirmed	4/27/2017 12:00:38 PM 1051 Main Lobby MPP112 Offline 192.168.0.91	FAAC
205	4/27/2017 12:08:27 PM	2300			Confirmed	4/27/2017 11:59:48 AM 1051 Main Lobby MPP112 Offline 192.168.0.91	FAAC
204	4/27/2017 12:08:27 PM	2300			Confirmed	4/27/2017 11:59:48 AM 1050 Main Lobby MPP112 Online 192.168.0.91	FAAC
203	4/27/2017 12:08:26 PM	2300			Confirmed	4/27/2017 11:59:25 AM 1051 Main Lobby MPP112 Offline 192.168.0.91	FAAC
202	4/27/2017 12:08:26 PM	2300			Confirmed	4/27/2017 11:59:25 AM 1050 Main Lobby MPP112 Online 192.168.0.91	FAAC
201	4/27/2017 12:08:24 PM	2300			Confirmed	4/27/2017 11:56:12 AM 1050 Main Lobby MPP112 Online 192.168.0.91	FAAC
200	4/27/2017 12:08:24 PM	2300			Confirmed	4/27/2017 11:56:11 AM 1051 Main Lobby MPP112 Offline 192.168.0.91	FAAC
199	4/27/2017 12:00:38 PM	1050	Main Lobby	MPP112	Online	192.168.0.91	System
198	4/27/2017 12:00:38 PM	1051	Main Lobby	MPP112	Offline	192.168.0.91	System
197	4/27/2017 11:59:48 AM	1051	Main Lobby	MPP112	Offline	192.168.0.91	System
196	4/27/2017 11:59:48 AM	1050	Main Lobby	MPP112	Online	192.168.0.91	System

Figure 6-6 View Logs Main Screen

The software reads the monthly log file for the date you have selected. The entire month for the year and month that you chose will be populated in the grid. The grid automatically scrolls to a certain day by using the History field and the Today icon.

- History – Will populate the grid for the month and year selected. The grid will scroll so that the day selected is visible and highlighted for the first log appearing for that date.
- Today Icon - Will populate the grid with the log file for the current month and scroll the grid to today's date and highlight the first log.

6.5 Report Tab – Generating Reports

The report tab allows you to generate 3 different types of reports:

- Facility Report – A report with the accumulated totals of all areas non-normal status states and the gate opening counts.
- Area Report – A report with the accumulated totals of all the lanes non-normal status states and gate counts for a selected area.
- Lane Report – A report with the accumulated totals of a single lane non-normal status states and gate counts.

Each report allows 4 levels of reporting:

- Hourly Report – Reports the totals using hourly bins. The start date and end date are configurable. All bins are an hourly accumulated total over the entire timespan.
- Daily Report – Reports the totals using hourly bins for one day.
- Monthly Report – Reports the totals using daily bins for one month. The hourly bins are accumulated for one month.
- Yearly Report – Reports the totals using monthly bins for one year.

6.5.1 Facility Report

The facility report shows the accumulated non-normal status states and gate counts for the entire facility. All areas are reported in one report. There are no filters. See *Figure 6.7 Facility Report Screen*.

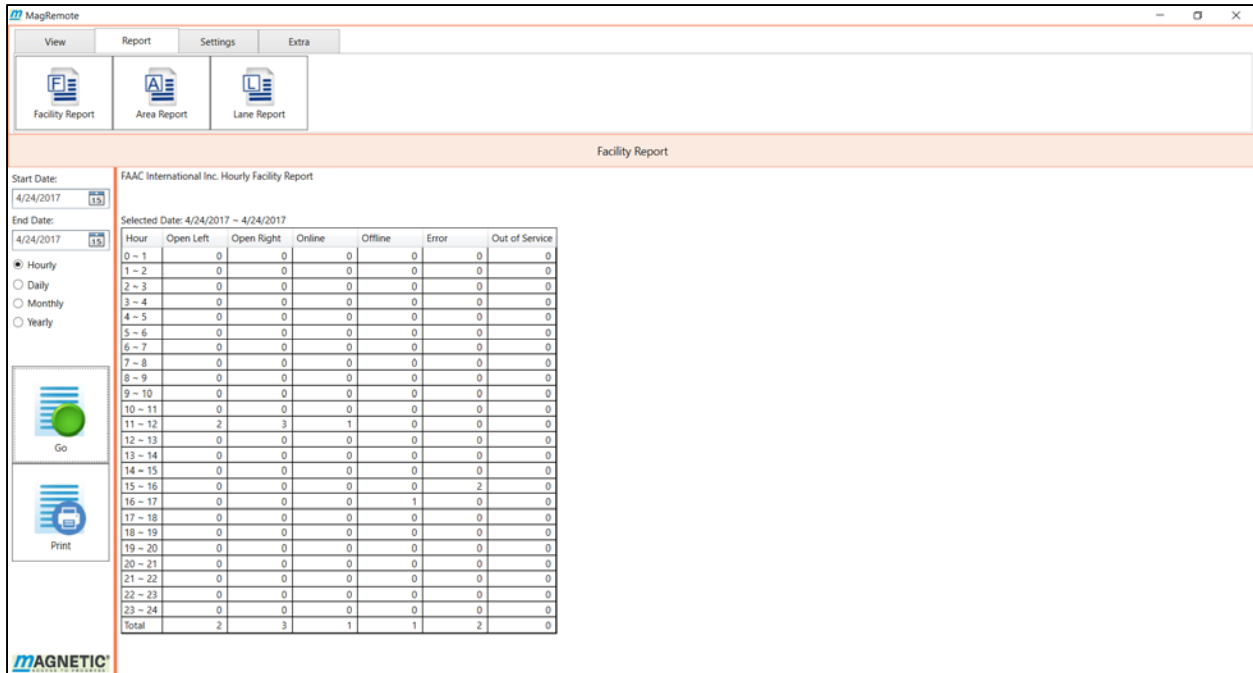


Figure 6-7 Facility Report Screen

6.5.1.1 Hourly Report

The Hourly Report allows you to choose a Start Date and an End Date. The software will accumulate the hourly bins for the entire timespan.

- Go Button – Generates the report.
- Print Button – Prints the report to the default printer. If a different printer is desired then the *Select Printer Before Print* option must be activated in Application Settings.

6.5.1.2 Daily Report

The Daily Report is generated using only the Start Date. The report will be generated similar to the Hourly Report except for only the day selected. The Daily Report is identical to the Hourly Report when the Start Date and End Date are the same day for the Hourly Report.

6.5.1.3 Monthly Report

The Monthly Report is generated using only the Start Date. A report will be generated using daily bins for the month selected. This report will show the accumulated totals for each day of the month.

6.5.1.4 Yearly Report

The Yearly Report is generated using only the Start Date. A report will be generated using monthly bins for the year selected. This report will show the accumulated totals for each month of the year.

6.5.2 Area Report

The Area Report is a subset of the Facility Report. It will report the accumulated totals of all lanes for a selected area. The Area Report screen is identical to the Facility Report screen except an Area filter grid is added. An area is selected by clicking on the desired area in the Area filter grid. See *Figure 6-8 Area Report Screen*.

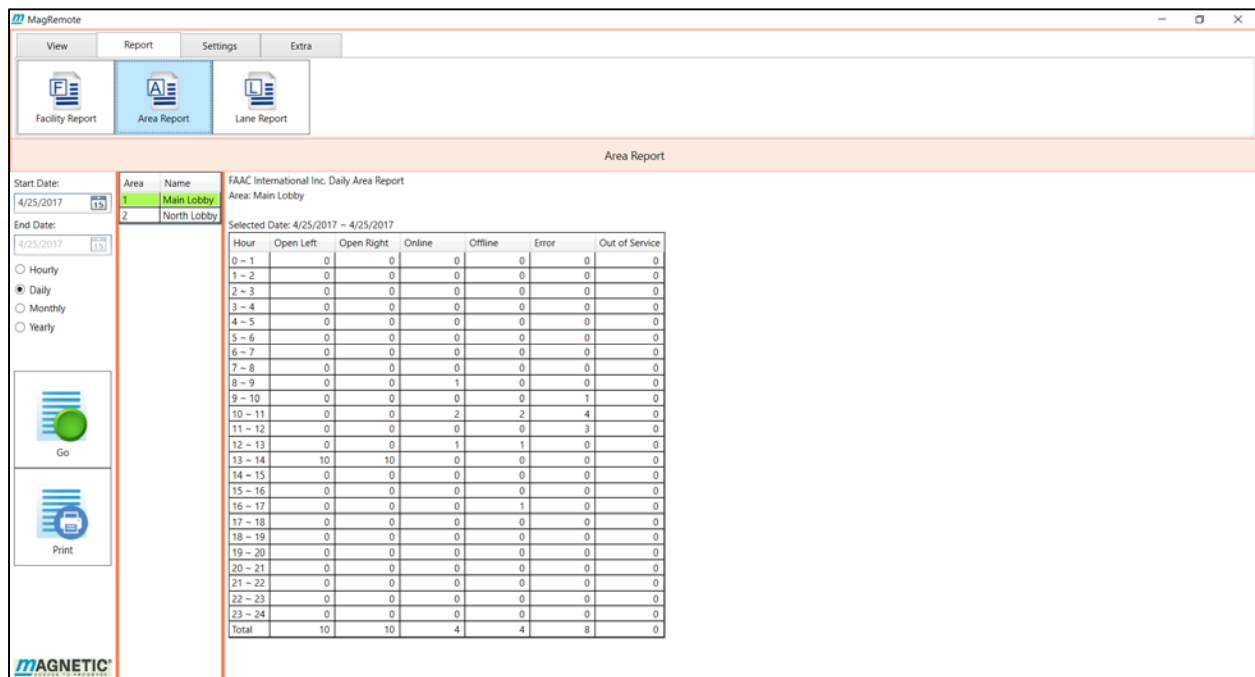
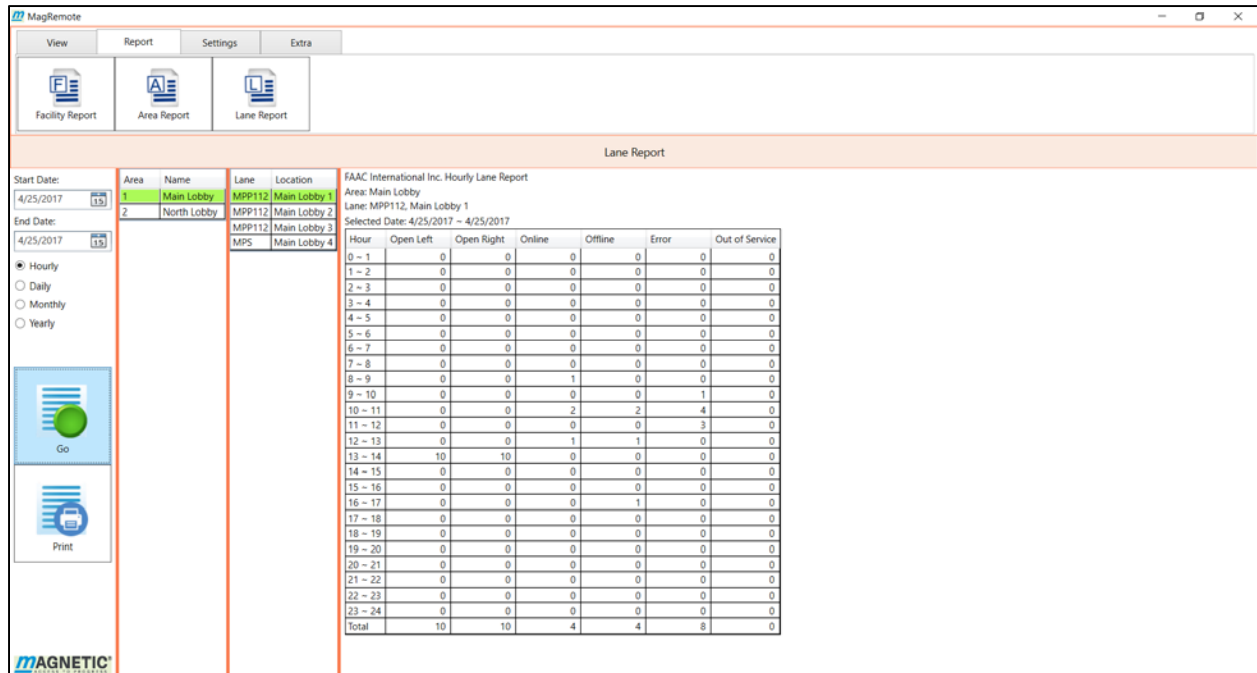


Figure 6-8 Area Report Screen

6.5.3 Lane Report

The Lane Report is a subset of the Area Report. It will report the accumulated totals of a single lane for a selected area. The Lane Report screen is identical to the Area Report screen except a Lane filter grid is added. The report will be generated identical to the Area Report for the selected lane. See *Figure 6-9 Lane Report Screen*.



The screenshot shows the 'MagRemote' application window with the 'Lane Report' screen. The interface includes a menu bar (View, Report, Settings, Extra) and three report type buttons: Facility Report, Area Report, and Lane Report. The main content area is titled 'Lane Report' and displays the following information:

Start Date: 4/25/2017
 End Date: 4/25/2017
 Selected Date: 4/25/2017 - 4/25/2017

FAAC International Inc. Hourly Lane Report
 Area: Main Lobby
 Lane: MPP112, Main Lobby 1

Area	Name	Lane	Location	Hour	Open Left	Open Right	Online	Offline	Error	Out of Service
1	Main Lobby	MPP112	Main Lobby 1	0 - 1	0	0	0	0	0	0
2	North Lobby	MPP112	Main Lobby 2	1 - 2	0	0	0	0	0	0
		MPP112	Main Lobby 3	2 - 3	0	0	0	0	0	0
		MPS	Main Lobby 4	3 - 4	0	0	0	0	0	0
				4 - 5	0	0	0	0	0	0
				5 - 6	0	0	0	0	0	0
				6 - 7	0	0	0	0	0	0
				7 - 8	0	0	0	0	0	0
				8 - 9	0	0	1	0	0	0
				9 - 10	0	0	0	0	1	0
				10 - 11	0	0	2	2	4	0
				11 - 12	0	0	0	0	3	0
				12 - 13	0	0	1	1	0	0
				13 - 14	10	10	0	0	0	0
				14 - 15	0	0	0	0	0	0
				15 - 16	0	0	0	0	0	0
				16 - 17	0	0	0	1	0	0
				17 - 18	0	0	0	0	0	0
				18 - 19	0	0	0	0	0	0
				19 - 20	0	0	0	0	0	0
				20 - 21	0	0	0	0	0	0
				21 - 22	0	0	0	0	0	0
				22 - 23	0	0	0	0	0	0
				23 - 24	0	0	0	0	0	0
				Total	10	10	4	4	8	0

The interface also includes a 'Go' button and a 'Print' button on the left side.

Figure 6-9 Lane Report Screen

7 Appendix

7.1 Ethernet I/O Module to MBC-110

7.1.1 Ethernet I/O Module Inputs to MBC 110 Outputs X1

Ethernet I/O Inputs	MBC Output X1
DI0	1
DI1	3
DI2	4
DI3	5
DI4	7
DI5	8
GND	2,6,9

7.1.2 Ethernet I/O Outputs to MBC 110 Inputs X2

Ethernet I/O Outputs	MBC 110 Inputs X2
0+	4
0-	24V
1+	5
1-	24V
2+	6
2-	24V
3+	7
3-	24V
4+	8
4-	24V
5+	9
5-	24V

7.1.3 Ethernet I/O Power to MBC 110 X7

Ethernet I/O Outputs	MBC 110 Inputs X2
+Vs	24V
GND	0V

7.2 Ethernet I/O Module to MBC-111

7.2.1 Ethernet I/O Inputs to MBC 111 Outputs

Ethernet I/O Inputs	MBC 111 Output
DIO	1
DI1	3
DI2	4
DI3	5
DI4	7
DI5	8
GND	9
GND	2
GND	6

7.2.2 Ethernet I/O Outputs to MBC 111 Inputs

Ethernet I/O Outputs	MBC 111 Inputs X2
0+	3
0-	24V
1+	4
1-	24V
2+	1
2-	24V
3+	5
3-	24V
4+	6
4-	24V